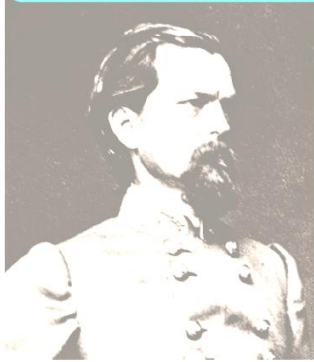


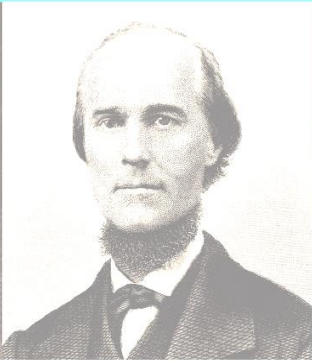
SS8H7abcd SUMMARY - The New South – Racism – Civil Rights Activists of the Early 20th Century

SS8H7a Evaluate the impact the Bourbon Triumvirate, Henry Grady, International Cotton Exposition, Tom Watson and the Populists, Rebecca Latimer Felton, the 1906 Atlanta Riot, the Leo Frank Case, and the county unit system had on Georgia during this period.

The Bourbon Triumvirate



In 1872, the Georgia Assembly elected John B. Gordon to the U.S. Senate. He was elected governor twice in the 1880s.



Joseph E. Brown was governor of Georgia for four terms from 1855 to 1865. After Reconstruction, Brown served as a U.S. senator.



Alfred Holt Colquitt was governor of Georgia from 1877 to 1882 and was a U.S. senator from 1883 to 1894.

BOURBON TRIUMVIRATE - All three men had something in common: conservative Democrat Governors who embraced the New South movement by wanting to transform Georgia from an economy based on King Cotton agriculture to a more modern industrialized economy that traded with the northern states. At the same time these three conservative Democrats wanted to keep the old traditions of white supremacy in the South during the "Redemption Period", a period of regaining political power from the Radical Republicans and restoring the type of government that once ruled before the Civil War.

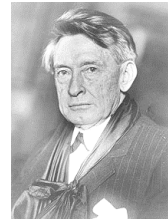


HENRY GRADY

Spokesman for the New South movement. Henry Grady used persuasive articles in the Atlanta Constitution newspaper to convince citizens that Georgia needed to become more industrialized and modern. As an orator (public speaker) he traveled to New York and gave speeches to wealthy northern businessmen. Grady persuaded northerners to invest money in southern businesses who wanted to become more industrialized. This changed and improved the Georgia economy that relied mostly on agriculture to one that started to have more manufacturing. As a result, the city of Atlanta became one of the largest cities in the South.

INTERNATIONAL COTTON EXPOSITION

The city of Atlanta became a place for Georgia farmers and factory owners to showcase what Georgia had to offer (especially cotton). Over 800,000 visitors came to Atlanta and viewed over 6,000 exhibits that demonstrated how cotton and new machinery could be used to make new products. This attracted northern investment dollars which helped industrialize the South and transform the state of Georgia and its cities into industrial centers. At another Cotton Exposition, Booker T. Washington gave his famous Atlanta Compromise speech.

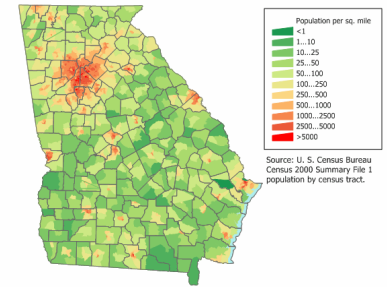


TOM WATSON and the POPULIST POLITICAL PARTY

As a US Congressman and Senator from Georgia and leader of the Populists Political Party, Tom Watson helped support Georgia's poor and struggling farmers. He created the RFD (Rural Free Delivery) which helped deliver US mail to people living in rural areas that helped build roads and bridges. Tom Watson opposed (was against) the New South movement and many of the conservative Democrat politicians. He believed that new industry in the South only helped people living in urban areas and did not benefit rural farmers. Early in his career Tom Watson tried to help both white AND black sharecroppers, but later in politics he became openly racist.

COUNTY UNIT SYSTEM

Elections were decided by a unit vote and not by a popular vote of the people. The population in each county determined how many unit votes a candidate would receive. There were 8 Urban counties that had the most population, but they only received six unit votes each. There were 30 Town counties that received four unit votes each. Finally, there were 121 Rural counties that received 2 unit votes each. This allowed small rural counties to have a lot of power in politics, however, the majority of the population of Georgia resided in Urban and Town counties. This system would later be declared unconstitutional.



REBECCA LATIMER FELTON

She is best known as a supporter of women's suffrage (the right to vote) and she also was in favor of prohibition -the banning of alcohol. While her husband was a politician, Felton used his political power to oppose Bourbon Triumvirate's New South movement. She supported small farmers from rural areas. As a writer for a newspaper, she openly expressed her views of white supremacy. She became the first female US Senator, but it was only for a day and under suspect circumstances.



LEO FRANK CASE

In 1915, a Jewish man named Leo Frank was lynched by an angry mob of racist whites for a crime he did not commit. Leo Frank had been falsely accused of killing a young 14 yr old girl named Mary Phagan at the Atlanta Pencil Factory. He was sentenced to death in prison but Georgia Gov. John Slaton changed his sentence to life in prison even though the evidence showed Leo Frank did not kill the girl. Tom Watson called for people to take action and Leo Frank was kidnapped from prison and the mob hanged him from a tree near Marietta Square. An Atlanta preacher started the rebirth of the Ku Klux Klan by burning a cross on top of Stone Mountain because of the Leo Frank case.

1906 ATLANTA RACE RIOT

Atlanta had gained a reputation as a southern city that prospered under white and black entrepreneurship as evident by the success of Alonzo Herndon and Booker T. Washington. However, political candidates like Tom Watson and Hoke Smith used the newspaper to spread racial fears and rumors of black men attacking white women. An angry mob of racist whites killed 26 innocent black men and wounded 100s of others. Military troops had to restore order to the city. Atlanta was no longer the same.



SS8H7abcd SUMMARY - The New South – Racism – Civil Rights Activists of the Early 20th Century

SS8H7b Analyze how rights were denied to African-Americans through Jim Crow laws, Plessy v. Ferguson, disenfranchisement, and racial violence.

JIM CROW LAWS

After Reconstruction in 1877, conservative white Democrats regained control of government through the KKK and black codes that restricted freedmen's rights. In order to preserve white supremacy, state and local governments began to create Jim Crow laws that segregated (or separated) blacks from whites in most public settings. Schools, military, housing, transportation, restaurants, restrooms, water fountains, and even cemeteries among other public settings were segregated. Blacks received inferior facilities and were punished for entering places designated for whites only.



PLESSY v. FERGUSON

Supreme Court case in 1896 that made it constitutionally legal for racial segregation, as long as facilities were "separate but equal". Homer Plessy, a man with only 1/8th black ancestry and 7/8 white ancestry was arrested for riding in a "whites only" railroad car. He tried to sue claiming that his 14th amendment rights had been violated, however, 7 Supreme Court justices ruled that it was not against the law to keep the races segregated. This ruling allowed racism to go unpunished in the South.



DISENFRANCHISEMENT

The 15th amendment of the US Constitution provided voting rights for African Americans. Angry southern racist whites did not want to let go of their power in state and local government. In order to preserve white supremacy, Georgia politicians began passing laws to restrict or deny (disenfranchise) the right of blacks to vote in elections. Literacy tests and poll taxes were targeted to keep blacks from voting that had been denied the right to an education and denied money for their work because of slavery. However, this kept poor & uneducated whites from voting too. The Grandfather clause gave back the right to vote to poor whites if they were related to someone who could vote before 1867, however, since blacks could not vote prior to 1867 this excluded them from being able to vote. Other unfair ways to disenfranchise blacks were white primaries, gerrymandering, and racial violence by KKK.



RACIAL VIOLENCE

Riots, lynchings, mob attacks, threats and intimidation were ways whites were able to enforce black codes and Jim Crow laws. The legal system did very little to protect the rights of blacks in the South. Hate groups like the KKK used violence to keep blacks from voting or exercising other rights that were supposed to be protected in the US Constitution. Racial violence also played a role in the Great Migration of blacks moving to northern cities.

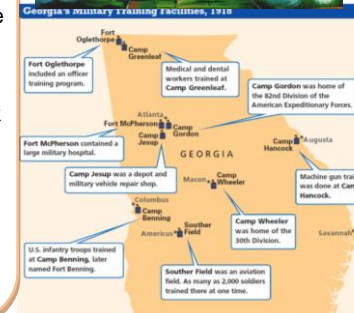
SS8H7c Explain the roles of Booker T. Washington, W. E. B. DuBois, John and Lugenia Burns Hope, and Alonzo Herndon.



SS8H7d Explain reasons for World War I and describe Georgia's contributions.

REASON FOR WWI

Densely populated European countries were economic and political rivals with one another. Ethnic conflicts, militarism, and the assassination of Austrian-Hungary Archduke Franz Ferdinand were causes of World War I. The US became involved after German U-boats sank the Lusitania ship carrying 128 Americans. US also feared Germany was trying to help Mexico invade the southern part of the United States known as the Zimmerman telegram.



GEORGIA WWI CONTRIBUTIONS

Georgia helped win WWI by providing over 100,000 soldiers and many women volunteers. Military camps around the state trained soldiers, pilots, and doctors and later became Forts that are still used today for training. There was also a prison camp that housed captured German soldiers. Cotton grown in Georgia made uniforms and food was sent overseas to the troops. Citizens bought Liberty Bonds and grew Victory Gardens to help.